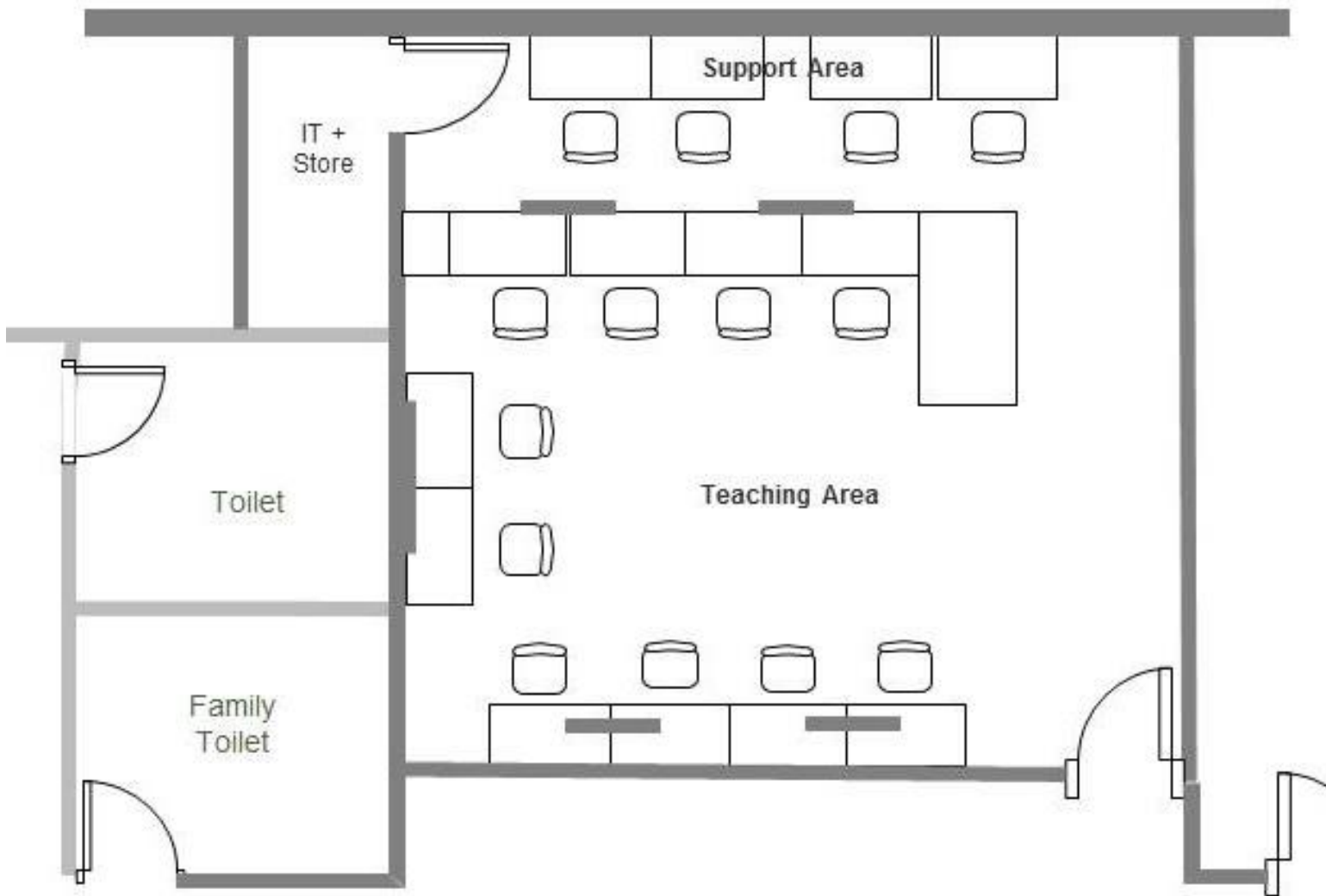


Tech 2 Layout



Tech 2 Required Cable Drops

What	Where	Power	SP+USB	Ethernet	HDMI	VGA	Notes
Student computer 1	East Wall	2	1	1			
Repeater Monitor 1	East Wall	1		1	1	1	2
Student computer 2	East Wall	2	1	1			
Student computer 3	East Wall	2	1	1			
Repeater Monitor 2	East Wall	1		1	1	1	2
Student computer 4	East Wall	2	1	1			
Student computer 5	South Wall	2	1	1			
Projector screen	South Wall	1					
Student computer 6	South Wall	2	1	1			
Student computer 7	Peninsular *	2	1	1			
Repeater Monitor 3	Peninsular *	1		1	1	1	2
Student computer 8	Peninsular *	2	1	1			
Student computer 9	Peninsular *	2	1	1			
Repeater Monitor 4	Peninsular *	1		1	1	1	2
Student computer 10	Peninsular *	2	1	1			
Instructor Computer 1 (KVM)	Peninsular *	2	1	1			1
Instructor Computer 2 (KVM)	Peninsular *	2	1	1			1
Instructor Ad-Hoc KVM link 1	Peninsular *	1		1			1
Instructor Ad-Hoc KVM link 2	Peninsular *	1		1			1
From KVM	Peninsular *				1	1	1, 2
VGA Splitter	Peninsular *	1	1			1	1, 2
HDMI Splitter	Peninsular *	1			1		1, 2
My Cloud Backup	West Wall	1	1	1			
Admin Computer 2	West Wall	2	1	1			
Bulletin Board Server	West Wall	2	1	1			3
BB server to Bulletin Board	West Wall			1			3
Printer 2	West Wall	1	1	1			
CLC Server 1 (KVM)	West Wall	2	1	1			4
CLC Server 2 (KVM)	West Wall	2	1	1			4
Membership Server (KVM)	West Wall	2	1	1			4
Maintenance service (KVM)	West Wall	2	1	1			4
Printer 1	West Wall	1		1			
Admin Computer 1	West Wall	2	1	1			
Phone (North West corner)	West Wall			1			5
Projector	Ceiling	1			1	1	2

	Where	Power	SP+USB	Ethernet	HDMI	VGA
Totals	East Wall	10	4	6	2	2
Totals	South Wall	5	2	2	0	0
Totals	Peninsular	18	7	10	4	4
Totals	West Wall	17	9	12	0	0
Totals	Ceiling	1	0	0	1	1
Grand Total		51	22	30	7	7

Tech 2 Cable Drop Notes

- Note 1 All instructional material shown to the students is sourced from one of the two instructor computers or from tablets or laptops as selected via a KVM switch. The selected source data is fed from the KVM switch to video splitters that are connected to repeater monitors and a projector with the intent of allowing the students to easily see the small detail which activates a process.
- Note 2 Source data from the selected instructor device can be in either VGA or HDMI format. The feed path to the repeater monitors and projector from the splitters can be either both HDMI cables *and* VGA cables or use a conversion system capable of passing the required data over Cat6 cable.
- Note 3 The CalendarHouse.org website is used as a single entry system for data used to source the Active Lifestyles printed newsletter, the presentation on the **electronic bulletin board** and **calendars** as well as the web. Data is entered **ONCE** to cover all services. The bulletin board server collects the appropriate data from the web site for display on the electronic bulletin board and potentially door calendars. Data from the bulletin board server is transmitted over Cat6 cabling to the electronic bulletin board. A similar link can service doorside calendars.
- Note 4 Three servers and a general service maintenance service are all managed by a KVM switch. The maintenance connection is used, free of charge, to diagnose and help to repair devices bought in by Calendar House members.
- Note 5 The phone needs to be away from the doors and ideally in the north-west corner adjacent to the support area tables.